



Harsh & Hazardous

KILLARK®

LZ Series

LINEAR LED TECHNOLOGY

for Harsh and Hazardous Environments

.60" (15)

5.79" (147)

8.27" (210)

53.23" (1352)

Mounting Centers
27.56" (700)



21" (742)

Mounting Centers
5.75" (400)

8.27" (210)

53.23" (1352)

Mounting Centers
27.56" (700)



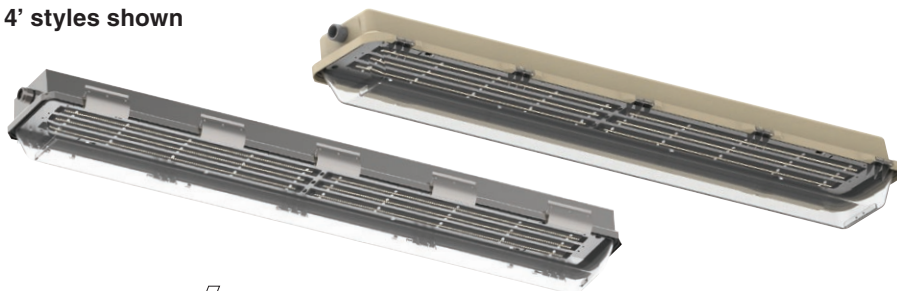


LZ2NL/LZ2SL SERIES

KILLARK

LZ LED INTRODUCTION & LOGIC

4' styles shown



Class I, Div. 2, Groups A, B, C, D
Class I, Zone 2, Groups IIC, IIB, IIA
Class II, Div. 1 & 2, Groups F, G
AEx nAII, Ex nAII
Wet Locations
Type 4X, IP66

Certified - File LR11713

ABS Type Approval (L32NL, L32SL)
NSF Food Handling (LZ2NL)

LINEAR^{lite}® *

* marca registrada MEXICO

FEATURES-SPECIFICATIONS

Applications

Linear LED Luminaires are designed for installations where moisture, dirt, dust, corrosion and vibration may be present, and Type 3, 4X IP66 areas where wind, water, snow or high ambients can be expected. They can be used in locations made hazardous by the presence of flammable vapors or gases or combustible dusts as defined by the NEC/CEC.

ABS (American Bureau of Shipping) type approval for use on decks, vessels, platforms, barges, ships and boats. Also suitable for docks and marinas.

NSF (National Sanitation Foundation) approved for "Food Handling" areas, typically requiring non-glass lighting.

Typical applications include manufacturing plants, and certain chemical and petrochemical processing facilities, sewage treatment plants, off-shore and dockside installations, garages, storage facilities, tunnels, and grain/food facilities.

Compliances

- UL-8750 for LED lighting
- ANSI/UL 1598(A)
- UL-844 Standard for lighting fixtures for hazardous locations, Class I, Division 2; Class II, Divisions 1 and 2; Class III
- CSA C22.2 no. 137-M1981 electric luminaires for use in hazardous locations
- Enclosed and gasketed
- Type 3, 4X, IP66

Materials

- Housing – one piece fiberglass reinforced polyester or 316 Stainless Steel
- Lens – Clear Lexan® impact resistant polycarbonate lens (Lexan is a registered trademark of SABIC)
- Two 3/4" NTP hubs – one at each end (includes one 3/4" close-up plug and two 3/4"x1/2" reducers for maximum user flexibility – LZ2NL hubs aluminum; LZ2SL hubs 316 Stainless Steel)

LED Features and Standards

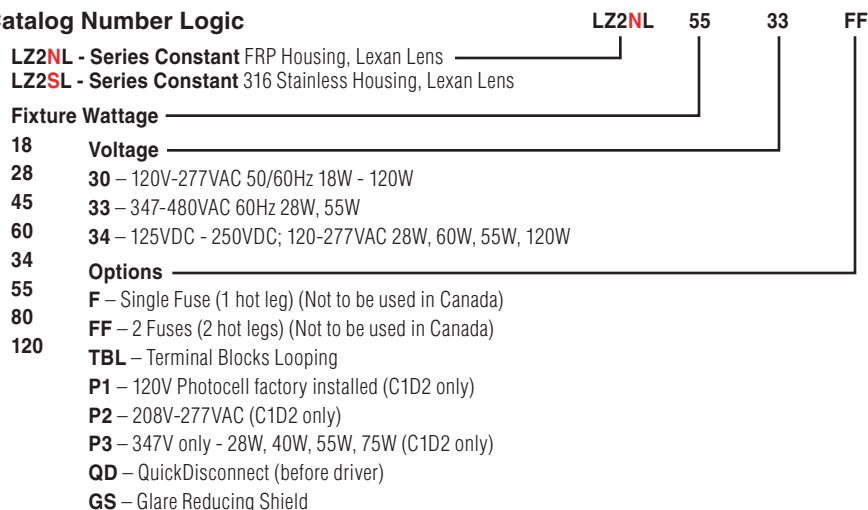
Supplemental **20KA/10KV Surge Protection** is **standard** (for 120-277 VAC models)
10KA/10KV Surge Protection (for 347-480 VAC)

- Many Midpower LEDs blend light to simulate fluorescent tube
- Crisp White Light for Excellent Color Rendering – Chromaticity 5000K (CCT); approx. 70 CRI
- Energy Savings – High lumens per watt
- LED Array Life – 100,000+ hours with 70% initial lumens

- Long Fixture Life – 50,000 - 55,000 maintenance free hours
- Ambient suitability -40°C to 55°C up to 120W
- Instant On – Including after power interruption
- World Voltage 120 - 277VAC 50/60Hz
- Solder-LESS LED Board Connections – Vibration Resistant

LED VS FLUORESCENT WATTAGE & DELIVERED LUMENS						
LED WATT	LUMENS	L/W	FLUORESCENT	LUMENS	L/W	
18W	2557	150	40W 1x40W BX	2471	63	
28W	3775	144	55W 1x55W BX	3766	65	
34W	5075	149	56W 2x28T5	4676	71	
45W	5562	137	64W 2x32T8	4772	80	
55W	7577	144	108W 2x54T5HO	8088	67	
60W	7618	132	120W 2x60T12HO	6965	56	
80W	11140	137	162 3x54T5HO	11619	65	

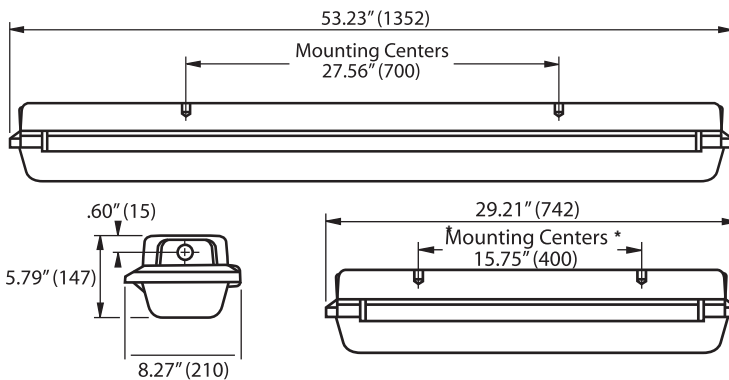
Catalog Number Logic



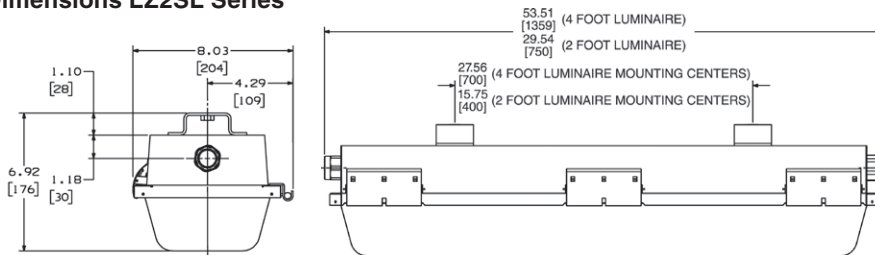
LZ SERIES – ORDERING INFORMATION & TECHNICAL DATA

ORDERING INFORMATION AND AMBIENT SUITABILITY									C1D2		C2D1 LZ2NL GRPS. FG LZ2SL GRPS. FFG		C1Z2 AEx nA Ex nA	
CATALOG NUMBER			WEIGHT LBS/KG	WATTS	LENGTH	VOLTAGE	AMPS	DELIVERED LUMENS	40°C	55°C	40°C	55°C	40°C	55°C
FIBERGLASS	WEIGHT LBS/KG	STAINLESS												
LZ2NL1830	12/5.4	LZ2SL1830	13/5.9	18	2'	120-277VAC	0.15 - 0.06	2557	T5	T4A	≤ 135°C	≤ 135°C	T5	T4
LZ2NL2830	12/5.4	LZ2SL2830	13/5.9	28	2'	120-277VAC	0.23 - 0.10	3775	T5	T4A	≤ 135°C	≤ 135°C	T5	T4
LZ2NL4530	12/5.4	LZ2SL4530	13/5.9	45	2'	120-277VAC	0.38 - 0.16	5562	T5	T4A	≤ 135°C	≤ 135°C	T5	T4
LZ2NL6030	14/6.4	LZ2SL6030	15/6.8	60	2'	120-277VAC	0.50 - 0.22	7618	T4A	-	≤ 135°C	-	T4	-
LZ2NL3430	23/10.4	LZ2SL3430	24/10.9	34	4'	120-277VAC	0.28 - 0.12	5075	T5	T4A	≤ 135°C	≤ 135°C	T5	T4
LZ2NL5530	23/10.4	LZ2SL5530	24/10.9	55	4'	120-277VAC	0.46 - 0.20	7577	T5	T4A	≤ 135°C	≤ 135°C	T5	T4
LZ2NL8030	23/10.4	LZ2SL8030	24/10.9	80	4'	120-277VAC	0.67 - 0.29	11140	T5	T4A	≤ 135°C	≤ 135°C	T5	T4
LZ2NL12030	25/11.3	LZ2SL12030	26/11.8	120	4'	120-277VAC	1.00 - 0.43	16010	T4A	-	≤ 135°C	-	T4	-

Dimensions LZ2NL Series



Dimensions LZ2SL Series



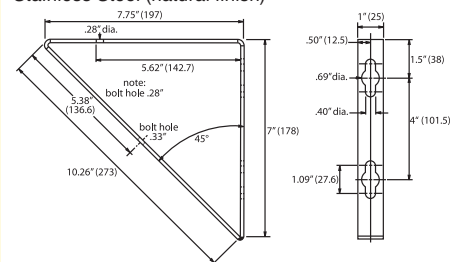
REPLACEMENT PARTS:	
LZ2N4LENS	4' Lens only LZ2NL/LZ2SL
LZ2N2LENS	2' Lens only LZ2NL/LZ2SL
LZ2N4BAR	4' Locking Bar only LZ2NL
LZ2N2BAR	2' Locking Bar only LZ2NL
LZ2S-LATCH	Latch and Spring LZ2SL

*Mounting Centers are 1/4-20" tapped for user all thread rod or below accessories.

Mounting Accessories

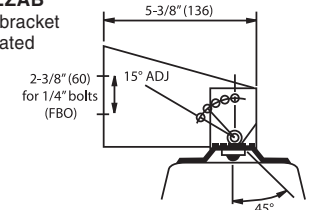
Wall Bracket Set

Part Number LZWB
Stainless Steel (natural finish)



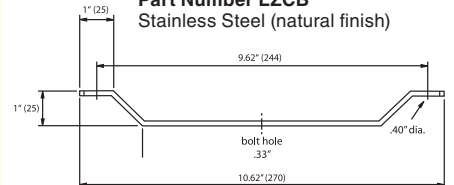
Adjustable Wall Bracket Set

Part Number LZAB
Stainless Steel bracket with ceramic coated pivot bolt



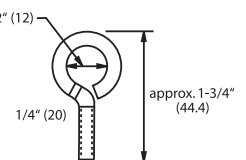
Ceiling Bracket Set

Part Number LZCB
Stainless Steel (natural finish)



Eyebolt Set

Part Number LZEB
Stainless Steel bolt with lockwasher & nut (natural finish)



Suspension Chains (2 required)

Part Number HFX-SC

36" length plated steel chain with snap link ends
For use with LZEB



CERTILITE[®] DESIGN

LIGHTING DESIGN SOFTWARE

Copyright ©2014 All Rights Reserved

- **Modern “Ribbon” Windows Interface with “Real Time” Calculations**
- **Easily import/export of CAD files (DWG/DXF/PDF)**
- **Enhanced photometric database with luminaire images and wireframes**
- **Ability to draw round or complex rooms and grids**
- **False Colors to indicate “Relative Brightness”**

See “Lighting Software link” at www.hubbell-killark.com to download

HKSB-LZ 01-18 © Killark, 2018

KILLARK[®]

Hubbell Killark
3940 Dr. Martin Luther King Drive • St. Louis, MO 63113
Phone: (314) 531-0460 • Fax: (314) 531-7164
www.hubbell-killark.com



Harsh & Hazardous